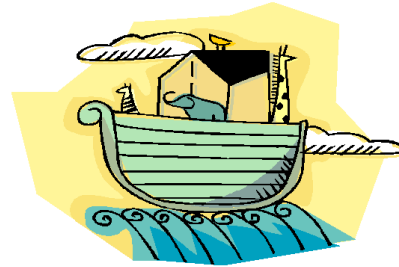


Nora's Ark (thanks to Fawn Nguyen for this activity)



Nora wants her Ark to sail along on an even keel. The ark is divided down the middle, and on each deck the animals on the left exactly balance those on the right—except for the third deck. Can you figure out how many SEALS are needed in place of the question mark so that they (and the bear) will exactly balance the six zebras?

